

LOADALL | AGRICULTURAL RANGE

JCB

SERIES II AGRI LOADALL



STAGE V

POWER RATING
109 - 173hp

LIFT CAPACITY
3,200kg - 6,000kg

LIFT HEIGHT
6.2 - 9.5m

THE WORLD'S NO.1 AGRICULTURAL TELESCOPIC HANDLERS.

Our Stage V Series III Loadalls are the telescopic handler of choice for agriculture, with a range of models for any application.



AGRISUPER



AGRIXTRA



AGRIPRO



OUR BEST CAB EVER.

Our all-new CommandPlus cab provides operators with the best-in-class cab space, noise level and all-round visibility, plus our command driving position.



BEST-IN-CLASS VISIBILITY

Industry-leading visibility with new seamless one-piece, multi curved glazing, increasing front visibility by 14%.

All controls are close to hand and clearly visible to the operator.



OUR BEST TRANSMISSIONS.

Our range of transmission options are tailored to your specific agricultural requirements, ranging from TorqueLock, PowerShift, AutoShift and the award winning DualTech Variable Transmission.



Enjoy Four Wheel Drive (4WD) as standard, Two Wheel Drive (2WD) at the press of a button, and the option of Limited Slip Differential (LSD), assuring traction at all times.

OUR BEST ENGINES.

Our 4.8-litre DIESELMAX engines meet the latest EU Stage V regulations with ultra-low emissions, auto-stop technology, low fuel consumption and next generation particulate control.



POWER FOR ALL APPLICATIONS

- 109hp / 81kW (516Nm)
- 130hp / 97kW (550Nm)
- 150hp / 112kW (600Nm)
- 173hp / 129kW (690Nm)



OUR BEST HYDRAULICS.

Our regenerative hydraulics system, auto bucket rattle, auxiliary venting, boom end damping and auto SmoothRide System all form part of the JCB Smart Hydraulics package.

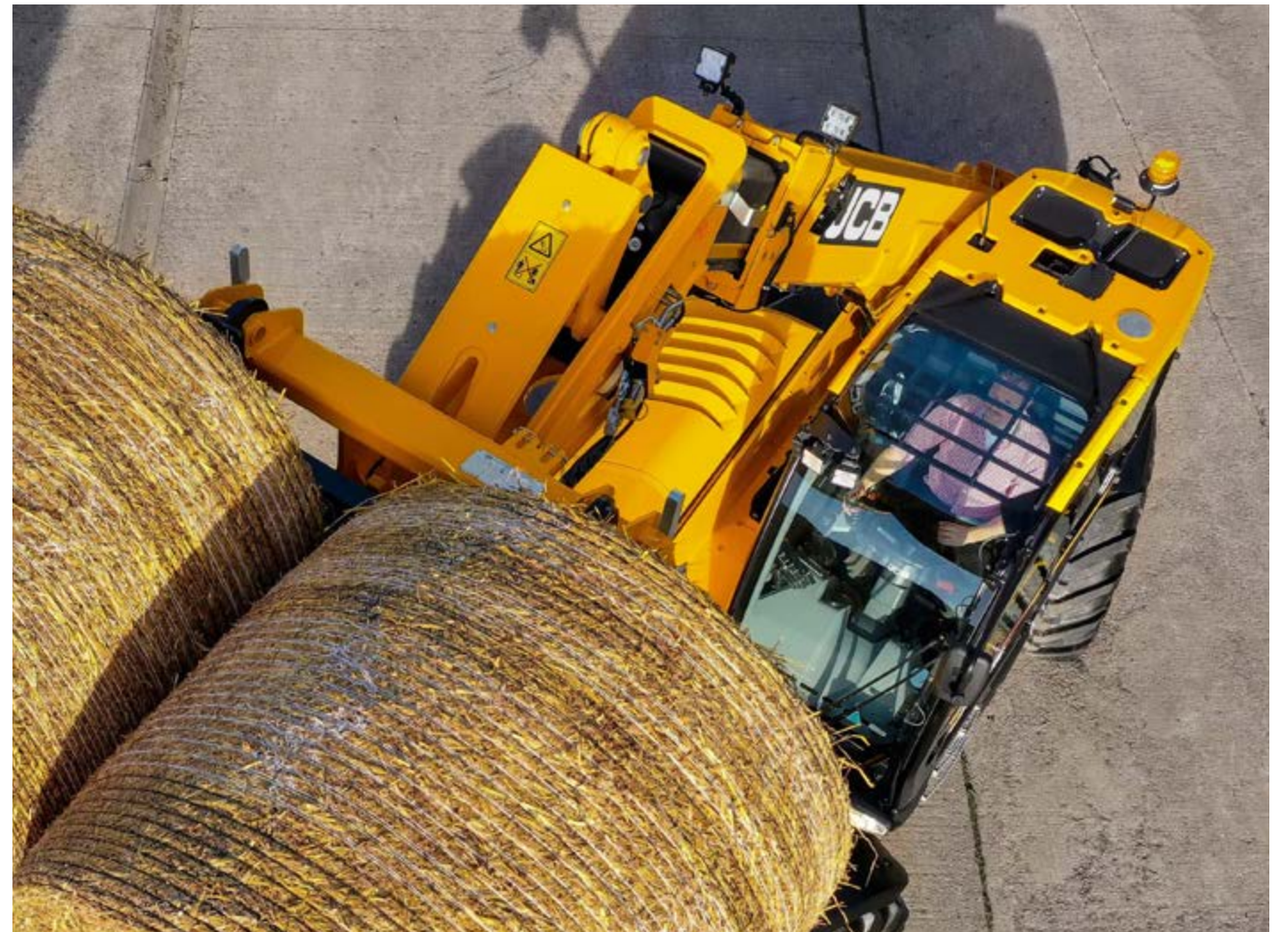


- Constant flow auxiliary for hydraulically powered attachments.
- Up to 160 litre per minute variable displacement piston pumps*.

*model dependant.

OUR BEST SAFETY FEATURES.

Our patented Adaptive Load Control System allows the operator to drive seamlessly without hindering productivity and ensuring stability.



BETTER ALL-ROUND VISIBILITY

Low boom pivot point, excellent right hand visibility over the engine pod with LED work lights to the front, rear, boom and hitch to optimise visibility in dark conditions.



LOADALL | AGRICULTURAL RANGE



SPECIFICATION.

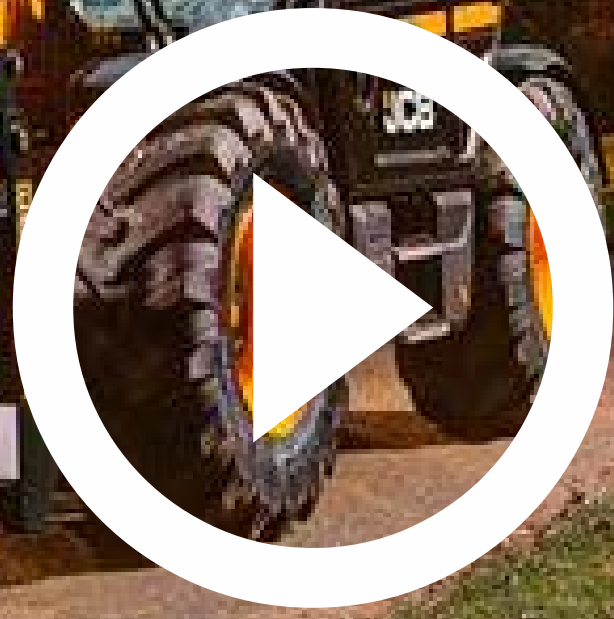
MODEL	532-60	538-60	532-70	538-70	542-70	536-95	560-80
Lift height	6.22m	6.23m	7m	7.01m	7.01m	9.49m	7.9m
Lift capacities	3200kg	3800kg	3200kg	3800kg	4200kg	3600kg	6000kg
Lift capacity at full height	3200kg	3800kg	2750kg	2500kg	2750kg	2000kg	3000kg
Lift capacity at full reach	1400kg	1550kg	1675kg	1400kg	1675kg	575kg	1750kg
Forward reach at max height	0.87m	0.87m	0.48m	0.48m	0.48m	2.43m	0.92m
Reach with 1 tonne payload	3.33m	3.34m	3.72m	3.37m	3.73m	5.09m	4.48m

LIVE JCB LINK
FITTED AS STANDARD



STANDARD FEATURES.

- New JCB DIESELMAX Stage V compliant engine
- CommandPlus Cab
- Powershift and DualTech Variable Transmissions
- Front / rear hydraulic auxiliary
- Smart Hydraulics
- Up to 11 LED worklights
- European tractor homologated

The JCB logo, consisting of the letters 'JCB' in a bold, white, sans-serif font, set against a black rectangular background with a yellow border. A small yellow square with the JCB logo is positioned to the left of the main text.

SERIES III AGRI LOADALL

STAGE V

MORE POWER. MORE TORQUE. MORE DUALTECH.

SERIES III AGRI LOADALL

REQUEST A QUOTE

The JCB logo, consisting of the letters 'JCB' in a bold, white, sans-serif font, set against a black rectangular background with a yellow border. A small yellow square with the JCB logo is positioned to the left of the main text.

www.jcb.com

